

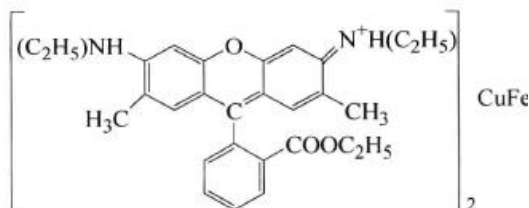
Rhodamine 6G (CFA)

Color Type Xanthene lake

Color Index No. P.R. 169

CAS NO. 12237-63-7

Structure:



Applications :

Printing inks	Toluene Gravure Ink	●
	Water based ink	●

Remark: ●High Recommendation;

◎Recommendation; - Limit Suitability

Description :

A pure blue light red, which meets the color requirements of three-color or four-color printing inks. It is mainly used for printing inks, especially toluene gravure printing inks and water-based soft printing inks.

Physical Properties :

Items	Data
Density (g/cm ³)	1.47-2.20
Specific Surface Area (m ² /g)	89-92
Oil Absorption (g/100g)	55-92
PH Value	6.0
Bulk Density (lb/gal)	12.2-18.3

Fastness Properties	Data
Heat Resistance (°C)	180
Light Resistance (Full Shade, 1~8)	4-5
Weather Resistance (1~5)	3-4
Ketone Resistance (1~5)	3
Aromatic Resistance (1~5)	3
Alcohol Resistance (1~5)	3

Storage conditions :

Should be sealed for avoiding light and moisture.

Package :

25KG/ Kraft Bag

*Product specific and application information are based upon our current knowledge. They are non-binding and cannot be taken as guarantee. Users must establish the suitability of individual products. We do not accept any liability relating to the use of our products in particular applications.

Hangzhou Fancheng Chemical Co.,Ltd

Add: No. 37 Jinyi Road, Xiaoshan, Hangzhou, China

Tel: +86-571-83531793

<http://www.finelandpigment.com/>